

**CHRISTMAS BULLETIN DECEMBER 24/25, 2025**  
**SPECIAL CHRISTMAS EDITION**

*Let us pray earnestly to God for the success of our endeavors to continue to build up His Kingdom on earth*

*Preserving Our Past  
&  
Building for the Future*

1880



1913



1957



Scan here to donate online!

This code will direct you to  
our Vanco site to donate  
directly to this campaign.

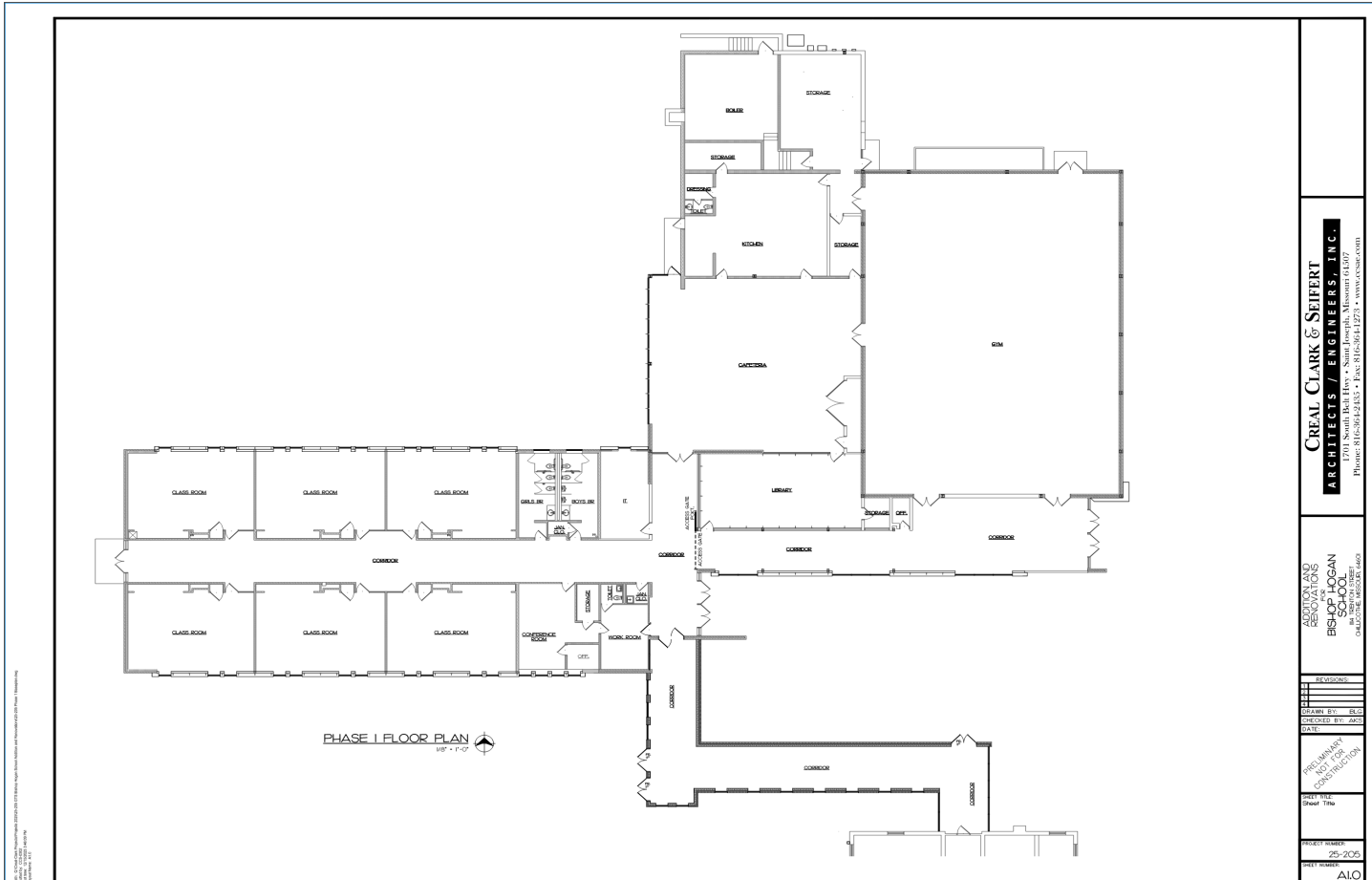
Thank you for your  
generosity and support!

**DIOCESAN OFFICE OF CHILD AND YOUTH PROTECTION**

THE DIOCESE OF KANSAS CITY-ST. JOSEPH IS COMMITTED TO COMBATING SEXUAL ABUSE IN THE CHURCH. IF YOU ARE A VICTIM OF SEXUAL ABUSE, OR IF YOU *OBSERVE OR SUSPECT* SEXUAL ABUSE:

1. Call the Missouri Child Abuse Hotline at 1-800-392-3738 (if the victim is currently under the age of 18) and
2. Contact your local law enforcement agency or call 911 and
3. After reporting to these civil and law enforcement authorities, report suspected *sexual abuse of a minor or vulnerable adult* to the Ombudsman, 816-213-6024 or [ombudsman@diocesekcsj.org](mailto:ombudsman@diocesekcsj.org), if the abuse involves a priest, deacon, employee or volunteer of The Diocese of Kansas City - St. Joseph. The Diocese has a sincere commitment to providing care and healing resources to victims of sexual abuse and their families. Please contact the Victim Assistance Coordinator (VAC), at 816-714-2357 ext. 516 or [victimadvocate@diocesekcsj.org](mailto:victimadvocate@diocesekcsj.org) for more information.

# PHASE I—WHAT WE NEED



View from Trenton St. of the corridor

## Phase I Objectives

- Fully secured corridor that connects the existing two buildings together and allowing free movement within the entire campus.
- Facade repairs to replace existing window walls
- Roof improvements to add 20-30 years to the life of the roof
- Electrical, plumbing, and HVAC improvements
- Interior classroom improvements

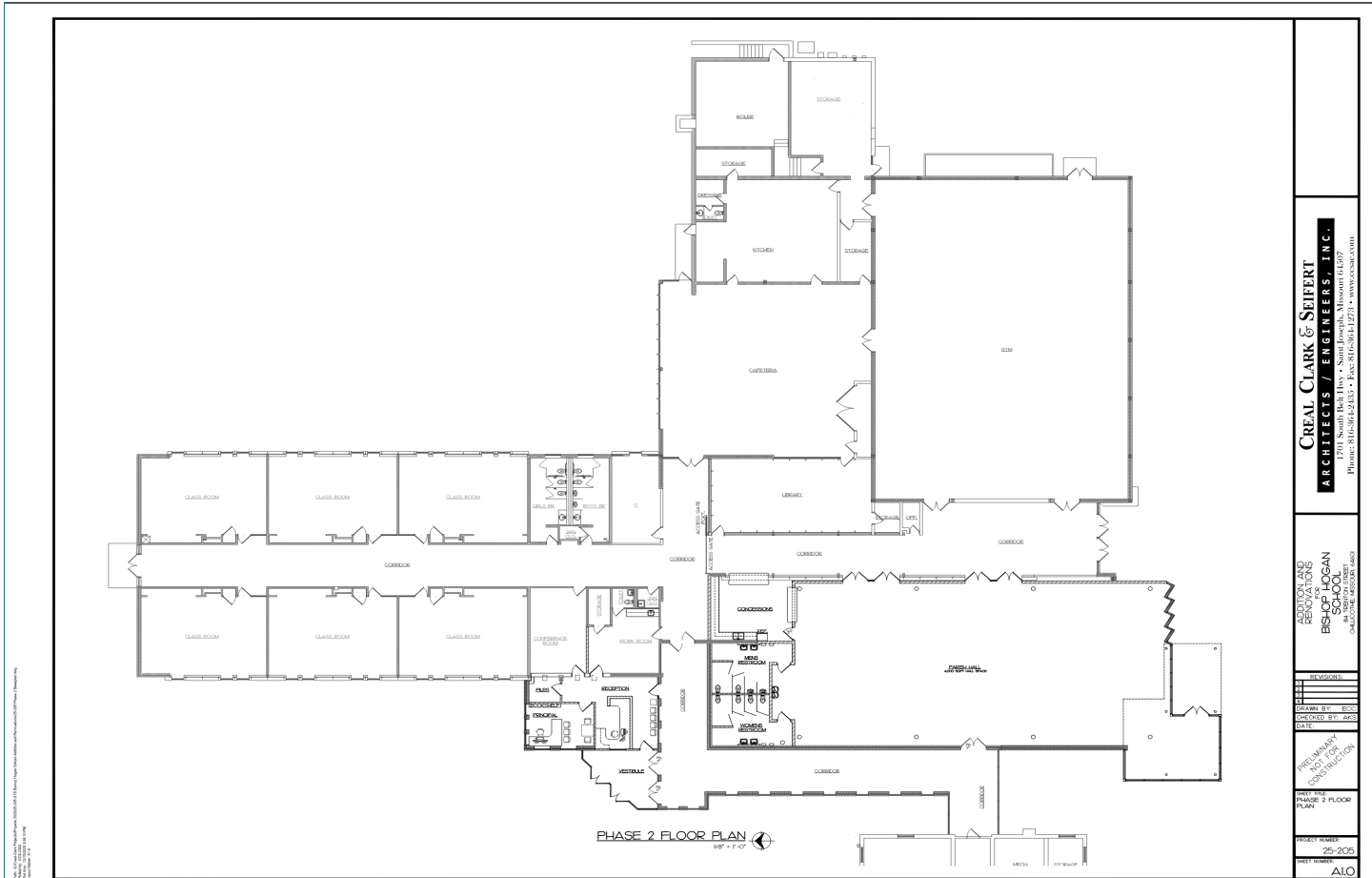


View JFK of the corridor/façade improvements

## Phase I Cost Estimates

- Corridor construction ~ \$420,000
- Renovations, repairs, and improvements to the existing 1957 school building ~ \$2,000,000
- The estimate for the renovation, etc. is fluid and will be done based on what we need to do to the building vs. what we would like to do. Therefore that cost could end up being lower.

# PHASE 2—WHAT WE WANT



View from Trenton St. of the parish hall



View from JFK of the new entrance/offices

## Phase 2 Objectives

- New self-contained ~4000 sq. ft. parish hall with new restrooms and concession stand/kitchenette
- New office space
- New pick up/drop off with parking lot

## Phase 2 Cost Estimates

- Parish Hall ~ \$1,316,000
- New Offices/Entrance ~\$246,000
- New Parking Lot Area ~\$400,000